

Marlen Textiles

AWNING & SHADE FABRICS



TOP GUN[®] FR LITE



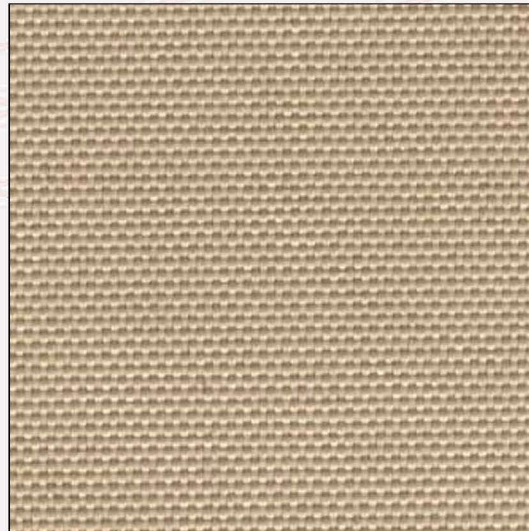
710-LT Royal Blue (8.0 oz/yd²)

TOP GUN[®] FR



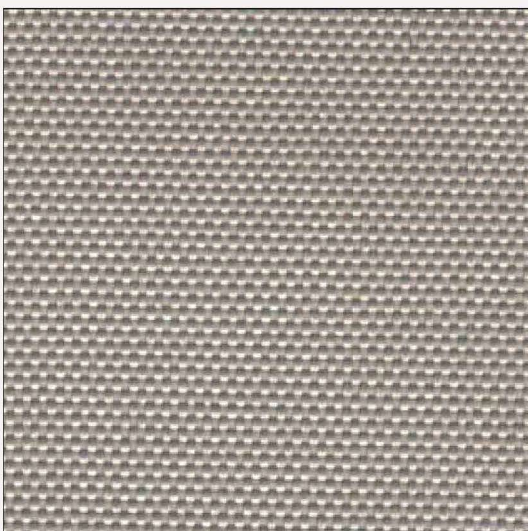
740 Hunter Green (13.0 oz/yd²)

TOP NOTCH[®] FR



1042 Tan (11.5 oz/yd²)

TOP NOTCH[®] 9



2648 Silver Gray (9.0 oz/yd²)

TOP NOTCH[®]



571 Black (11.5 oz/yd²)

TOP GUN® FR LITE



751-LT Raven
Black



710-LT Royal
Blue



779-LT Chocolate
Brown



719-LT Tan



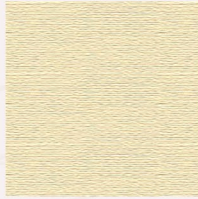
740-LT Hunter
Green



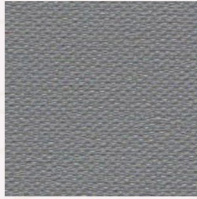
765-LT White



776-LT
Burgundy



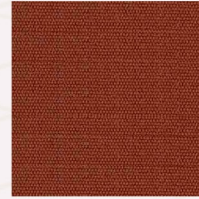
707-LT Ivory



783-LT Silver
Gray



731-LT Ocean
Blue



743-LT Terra
Cotta



736-LT Red

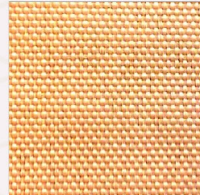
TOP NOTCH® FR



1074 Admiral
Navy



1094 Carib-
bean Blue



1042 Tan



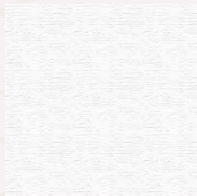
1049 Black



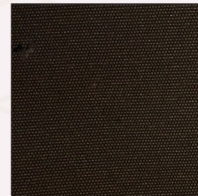
1088 Forest
Green



1092 Charcoal



1087 White



1008 Taupe



1006 Cardinal
Red

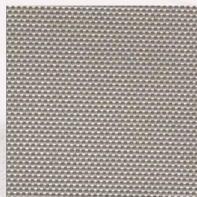
TOP NOTCH® 9



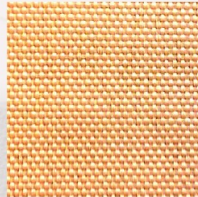
2674 Admiral
Navy



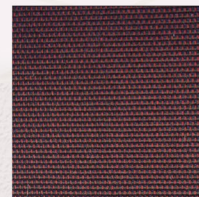
2694 Carib-
bean Blue



2648 Silver
Gray



2642 Tan



2609 Burgundy
Weave



2649 Black



2688 Forest
Green



2692 Charcoal



2687 White



2608 Taupe



2606 Cardinal
Red

TOP GUN® FR



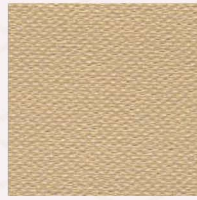
751 Raven
Black



710 Royal Blue



779 Chocolate
Brown



719 Tan



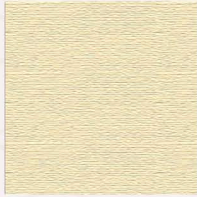
740 Hunter
Green



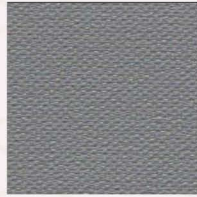
765 White



776 Burgundy



707 Ivory



783 Silver Gray



731 Ocean Blue



743 Terra
Cotta



736 Red

Top Gun FR, Top Gun FR Lite & Top Notch FR have been
3rd party tested and meet the following certifications:

MVSS-302

NFPA-701

California State Fire Marshall - Title 19

CPAI 84

CAN/ULC-S109-03

FAA/FAR 25.853

TOP NOTCH®



594 Pacific
Blue



579 Forest
Green



574 Command-
er Navy



570 Tan



559 Taupe



577 Red



576 Burgundy



567 Silver Gray








558 Charcoal



571 Black



568 White

Non FR Fabrics			FR Fabrics		
Factor					
Fabric Type	Solution Dyed	Solution Dyed	Solution Dyed	Acrylic Coated	Acrylic Coated
Weight (oz/sq yd)	11.5	9.0	11.5	13.0	8.0
Relative Cost	\$\$\$	\$\$	\$\$\$	\$\$	\$\$-
Tear Strength	Excellent	Good	Good	Good	Good
Water Repellancy	Excellent	Good	Good	Good	Good
Water Resistance	Good	Good	Good	Good	Good
Abrasion Resistance	Caution	Caution	Good	Good	Good
Dimensional Stability	Good	Good	Good	Good	Good
Colorfastness	Good	Good	Good	Caution	Caution
Custom Colors	Caution	Caution	Caution	Good	Good
Flame Retardancy	Not Recommended	Not Recommended	Good	Good	Good
Reversible	Good	Good	Not Recommended	Good	Good
Weldability	Good	Good	Good	Good	Good
Printability	Good	Good	Good	Good	Good
Warranty Period	Good	Good	Good	Good	Good
Maintenance	Good	Good	Good	Good	Good

Excellent	Good	Caution	Not Recommended
-----------	------	---------	-----------------

The following Graphics Applications can be used:

Latex Paint: Top Notch, Top Notch 9, Top Notch FR, Top Gun FR, Top Gun FR Lite

Vinyl Paint: Top Notch, Top Notch 9, Top Notch FR, Top Gun FR, Top Gun FR Lite

Digital Print: Top Notch, Top Notch 9, Top Notch FR, Top Gun FR, Top Gun FR Lite

Heat Transfer: Top Notch, Top Notch 9, Top Notch FR

RF Acrylic: Top Notch, Top Notch 9

The following Welding/Heat Sealing Applications can be used:

Bar: Top Notch, Top Notch 9, Top Notch FR, Top Gun FR, Top Gun FR Lite (all with and without tape)

Impulse: Top Notch, Top Notch 9, Top Notch FR, Top Gun FR, Top Gun FR Lite (all with and without tape)

Hot Wedge: Top Notch, Top Notch 9, Top Notch FR, Top Gun FR, Top Gun FR Lite (all with and without tape)

Hot Air: Top Notch, Top Notch 9, Top Notch FR, Top Gun FR, Top Gun FR Lite (all with and without tape)

RF: Top Notch, Top Notch 9, Top Notch FR, Top Gun FR, Top Gun FR Lite

Ultrasonic: Top Notch, Top Notch 9, Top Notch FR, Top Gun FR, Top Gun FR Lite

Marlen Textiles

Selecting the right fabric for your awning or shade project is critical. Besides picking the right color and whether you need a flame resistant fabric, other factors should be considered. Things like how long before it leaks or fades, does it stretch or sag, how strong is it (will it tear), can I weld it, can I apply graphics to it and frankly how long will it last. Also, don't forget about weight and how easy it is to work with. Because there are so many factors, Marlen Textiles offers a wide range of fabrics in weights from 8 to 13 ounces per square yard, all with unrivaled performance. Building on 30+ years' experience making premium outdoor fabrics, Marlen offers five premium products to choose from for your next Awning or Shade project. All products are made with excellent strength, durability, tear and abrasion resistance, dimensional stability, UV and mildew resistance, making these among the best fabrics to use for your awning, tent, gazebo, canopy or any other outdoor shade application.

TECHNICAL DATA

Characteristic	TOPNOTCH®	TOPNOTCH₂®	TOPNOTCH^{FR}®	TOPGUN^{FR}®	TOPGUN^{FR LITE}®
Fabric Type	Solution Dyed	Solution Dyed	Solution Dyed	Acrylic Coated	Acrylic Coated
Width, inches	60	60	60	62	62
Roll Size, yards	50	50	50	45	50
Weight, oz/yard ²	11.5	9.0	11.5	13.0	8.0
Tensile lbf, Warp x Fill	500+ x 305	500+ x 300	500 x 240	498 x 380	275 x 200
Tongue Tear lbf, Warp x Fill	46 x 38	30 x 22	24 x 14	25 x 18	12 x 10
Snow Load, lbs/ft ²	54,000+	38,000+	38,000+	36,000+	26,000+
Spray Rating	100	100	90+	90+	90+
3 Drop, cm	36	40	90	70	60
UPF Sun Protection	50+	50+	50+	50+	50+
Stretch, %, Warp x Fill	<1 x <1	<1 x <1	<1 x <1	<1 x <1	<1 x <1
Shrinkage, %, Warp x Fill	0 x 0	0 x 0	0 x 0	0 x <1	<1 x <1
Warranty, Years	8	8	8	8	5

500 Orchard Street New Haven, MO 63068
 (800) 343-6326 (573) 237-4444 Fax (573) 237-4491
www.marlentextiles.com

Contact Marlen Textiles for specific details of warranty coverage.
 9201901